

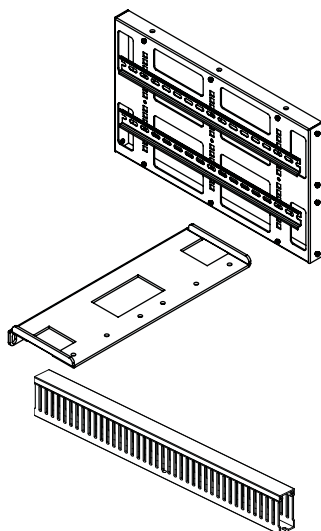
IRP1063D10 6U DIN Rail Panel Installation

Included in this package

(1) 6U Din Rail Main Panel.

(2) 6U Ear Bracket ❖

(2) PVC Wire Duct♦



(14) M4 x 8 Screws



(4) #10-32 x 5/8 Rack Screws



(4) #12-24 x 5/8 Rack Screws



Installation Steps

Step 1. Installing Ear Bracket. Placing a 6U ear bracket on right side of the 6U main panel. Align all 4 screw holes on the 6U ear bracket with (4) M4 Nuts on the right side of panel. (Figure 1)

Step 2 Tighten all 4 M4 screw to secure 6U ear bracket on to the 6U panel.

Step 3 Repeat the same process for the left hand side 6U bracket.

Step 4. Installing PVC Wire duct. Sliding the PVC cover off the wire duct.

Step 5 Align wire duct's inside open slots with (3) M4 Nuts on the 6U Main Panel. Secure PVC duct to the 6U main panel with (3) M4 x 8 screws. (Figure 2)

Step 6 At this point you have complete the installation of IRP1063D10 panel.

Tip: 9x9 square holes are design to use with RSN1035-K1 cage nuts kit (Optional Item. Not included) By installing cage nuts on the 9x9 square holes, you can mount your DIN at different height depends on our DIN rail equipment height.

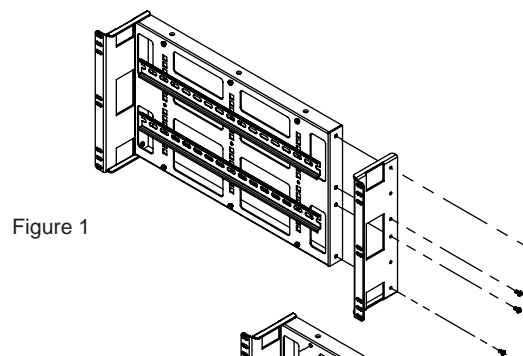


Figure 1

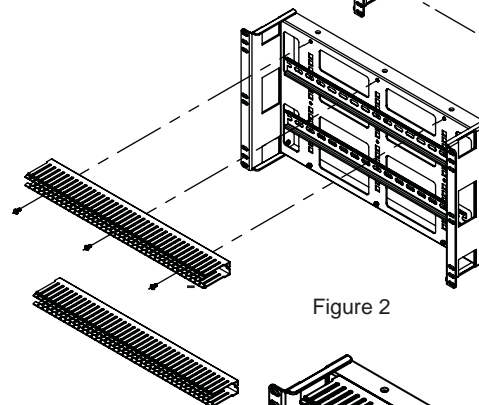


Figure 2

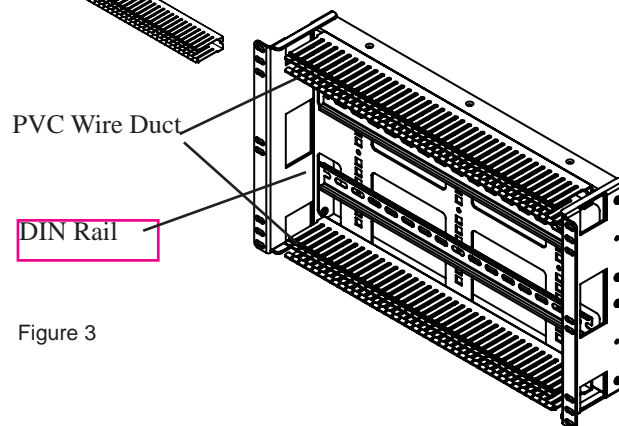


Figure 3